

Conferences & Events



Worcester Racecourse is the ideal venue for your conference or event, with a range of versatile suites to accommodate up to 300 delegates.

Whether you choose our Day Delegate Package or a bespoke alternative, our experienced team will work with you to deliver your every need. Our talented chef and his team use the very best local, seasonal produce to create fantastic menus, ensuring your guests will enjoy their day and be at their most productive during your meeting or conference. Pick from our two great value day delegate packages, or browse our conference & events menus for a bespoke package to suit your requirements.

Equipment hire including a PA system, flipchart, lectern and podium are included in all of our packages, as well as free WiFi and ample free parking.

Day Delegate Packages

Delegate Package 1

£20^{+VAT} pp

- ◆ Room hire
- ◆ Tea & coffee on arrival
- ◆ Chef's choice buffet lunch
- ◆ Afternoon tea & coffee
- ◆ PA system, projector & screen, lectern, podium & flipchart
- ◆ Water on the tables
- ◆ Car parking
- ◆ WiFi

Minimum 30 people. If you would like a similar package for a smaller number of people please call us on 01905 253 64 for a quote.



Delegate Package 2

£29^{+VAT}pp

- ◆ Room hire
- ◆ Tea & coffee on arrival
- ◆ Morning pastries
- ◆ Chef's choice buffet lunch
- ◆ Afternoon tea & coffee
- ◆ Afternoon snack
- ◆ PA system, projector & screen, lectern, podium & flipchart
- ◆ Water on the tables
- ◆ Car parking
- ◆ WiFi

Minimum 30 people. If you would like a similar package for a smaller number of people please call us on 01905 253 64 for a quote.

Winter Warmer Special Offer

£10^{+VAT}pp

Available November – February only. Minimum 30 people. If you would like a similar package for a smaller number of people please call us on 01905 253 64 for a quote.

- ◆ Room hire
- ◆ Tea & coffee on arrival
- ◆ Yorkshire pudding beef wrap lunch
- ◆ Afternoon tea & coffee
- ◆ PA system, projector & screen, lectern, podium & flipchart
- ◆ Water on the tables
- ◆ Car parking
- ◆ WiFi



To book any of our packages or enquire about availability please call us on 01905 253 64 or email info@worcester-racecourse.co.uk

The Difference is Taste

If you would prefer to build your own bespoke package we have a number of menu options to suit all budgets.

Extras can be added on top of all of our menus, so if you have any specific requirements or ideas please let us know and our team will be happy to put together a package for you.

Lunch Menu

Create your own buffet by selecting 5 or 7 items from the menu below.

5 items - £10^{+VAT} pp

7 items - £11.66^{+VAT} pp

5 items choose;

2 from section A & 3 from section B

7 items choose;

3 from section A & 4 from section B

Additional items;

£2.50^{+VAT} per section A & £1.66^{+VAT} per section B

Section A

- ◆ Chicken goujons, served with a smoky BBQ sauce
- ◆ Jalapeno peppers stuffed with cream cheese
- ◆ Chicken tikka skewers, with a mint yoghurt riata
- ◆ Battered crispy cod bites
- ◆ Pork pies
- ◆ Cooked belly pork bites, tossed in a sweet chilli glaze
- ◆ Coconut breaded butterflied king prawns, served with a garlic dip
- ◆ Breaded brie, with a cranberry dip
- ◆ Smoked salmon & cream cheese & chive blinis

Section B

- ◆ Potato wedges tossed in black pepper & fresh rosemary
- ◆ Vegetable spring rolls
- ◆ Mini rosti potato bites
- ◆ Mac & cheese bites
- ◆ Sausage rolls
- ◆ Garlic & herb ciabatta dough balls
- ◆ Vegetarian quiche selection
- ◆ Salad Selection – Mixed leaf, tomato & cucumber salad & coleslaw
- ◆ Vegetable Dim Sum
- ◆ Nachos, cheese, salsa, guacamole, crème fraiche



Soup & Sandwich

£8.30^{+VAT} pp

- ◆ Selection of freshly cut sandwiches
- ◆ Soup of the day
- ◆ Seasoned potato wedges

Minimum 20 people. For smaller numbers please call us on 01905 253 64 for a quote. Price excludes room hire.

Jacket Potato

£10^{+VAT} pp

Home baked jacket potatoes, served with butter portions with a selection of fillings
Please choose 2 premium, 2 standard
(£3^{+VAT} every extra premium filling, £1.50^{+VAT} for standard fillings)

Premium

Chilli, 3 bean chilli (v), lemon scented tuna mayonnaise, pulled pork, prawn mayonnaise, garlic & stilton mushrooms (v)

Standard

Cheese, coleslaw, baked beans, roast Mediterranean vegetables

Minimum 30 people. For smaller numbers please call us on 01905 253 64 for a quote. Price excludes room hire.

Healthy Buffet

£12.45^{+VAT} pp

- ◆ Slices of hand carved ham, pastrami & turkey
- ◆ Chicken breast marinated in lemon, garlic & thyme
- ◆ Salmon, cold poached in dill & white wine
- ◆ Crudités of carrot, celery, red peppers
- ◆ Hummus, tzatziki & tahini dips
- ◆ Israeli Couscous, mixed with apricots, mint & thyme
- ◆ Roasted beetroot tossed in fennel seeds & tarragon
- ◆ Seasoned new potato & spring onion salad tossed in a light olive oil vinaigrette
- ◆ Dressed frizee & red amaranth salad, with sweet red peppers & strips of cucumber

Minimum 30 people. For smaller numbers please call us on 01905 253 64 for a quote. Price excludes room hire.



Exhibitions & Outdoor Events

With versatile large indoor spaces and acres of outdoor space, Worcester Racecourse is the perfect location for your exhibition or outdoor event.

Our site also boasts great transport links from the M5, and from Worcester Foregate Street Train Station, and ample free parking for over 500 cars.

Along with a separate reception area perfect for event registrations, and multiple site entrances, there is also an extensive power supply to ensure you can run everything that you need to.

Want to find out more? To enquire about venue availability or to ask a question call us on 01905 253 64, for outdoor events you will be asked to complete an application form which can be found on our website www.worcester-racecourse.co.uk or email info@worcester-racecourse.co.uk

Premium Event Marketing

Package - £250^{+VAT}

Get your brand/event in front of our racing audience with the Premium Event Marketing package, with 20 racedays and selected fixtures attracting over 10,000 people, your brand/event will have maximum exposure to our customers.

When hiring our venue for an exhibition or outdoor event, you also receive additional marketing benefits from our dedicated marketing team. They provide support with your own marketing activity*, including:

- ◆ Website event listing on worcester-racecourse.co.uk
- ◆ Social media posts on Facebook, Twitter & Instagram with a combined audience of over 15,000 people
- ◆ Email marketing to Worcester Racecourse's database of over 18,000** people
- ◆ TV screen advertising around the racecourse on selected dates of your choice (additional cost)
- ◆ Race day programme full page advert (additional cost)

*Subject to receiving correctly sized artwork/imagery to promote the event
** Your event will be added to a Worcester Racecourse email going to the full database but this will be a sub-story, we are not able to send solus emails on behalf of a third party event to our database

Severn Suite

Second Floor

Upper Tier

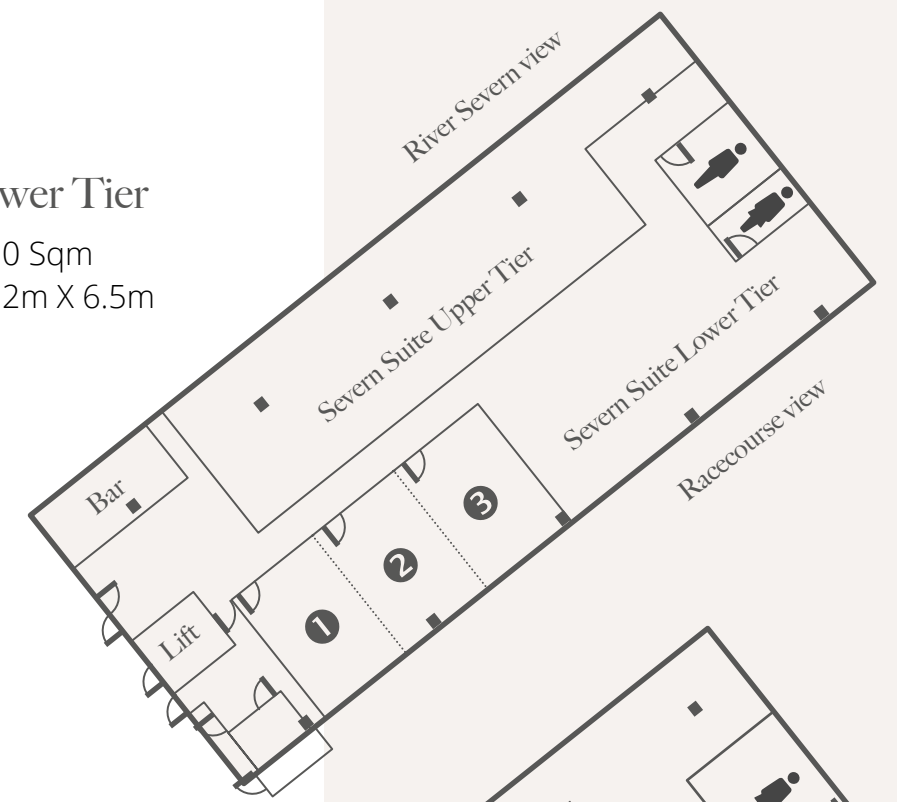
- ◆ 100 Sqm
- ◆ 18m X 5.5m

Lower Tier

- ◆ 80 Sqm
- ◆ 12m X 6.5m

Meeting Rooms

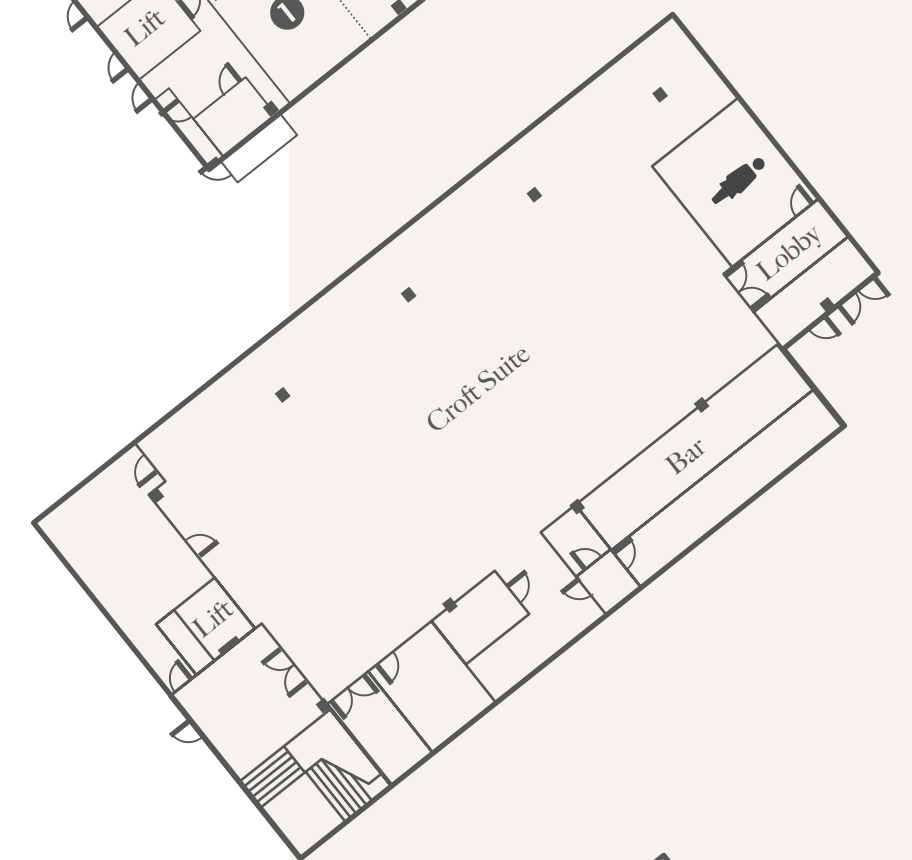
- ◆ Folding Walls
- ◆ 5m X 3.5m total



Croft Suite

First Floor

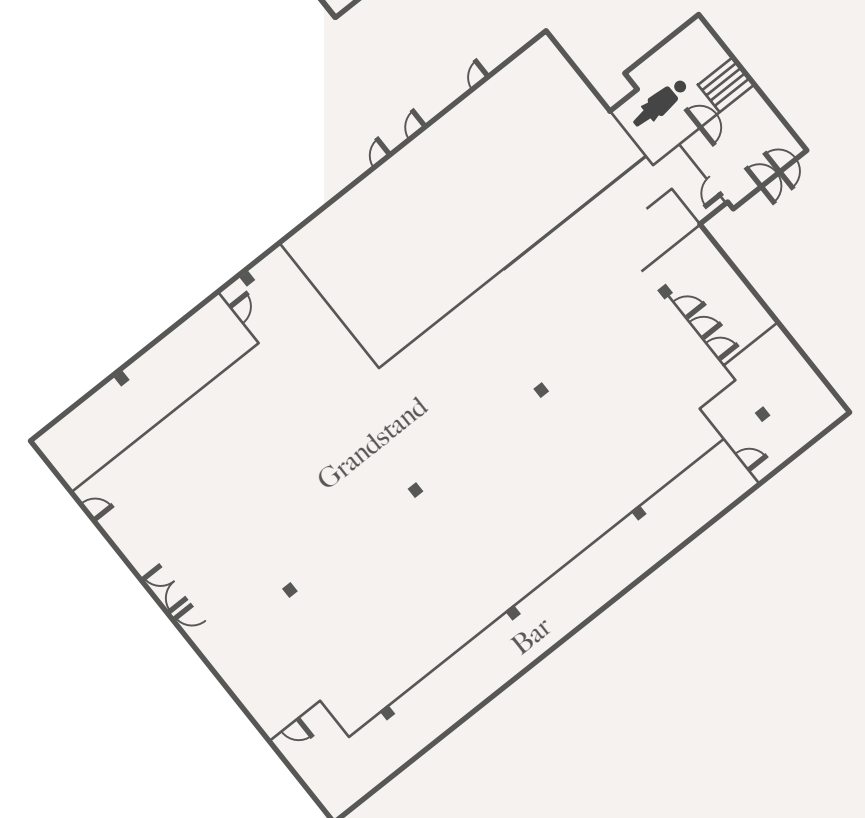
- ◆ 260 Sqm
- ◆ 22m X 12m



Grandstand

Ground Floor

- ◆ 265 Sqm



There is lift access to the first and second floor, with all floors accessible for disabled guests.

How to find us

Directions

Worcester Racecourse is ideally located in the heart of Worcester City Centre, close to train and bus links and easily accessible on foot. Located close to the M5 motorway, Worcester Racecourse offers easy access for all guests wherever their starting point may be.

By road

From the north or south take Junction 6 off the M5 and follow the A449 towards Worcester City Centre. From the West take the A443 and A44, both offer good access to the City Centre. Follow the brown racecourse signs. The postcode for the car park on non-racedays is WR1 3EJ.

By rail

There are frequent British Rail services to Worcester Foregate Street Station which is 10 minutes walk from the Racecourse, and also to Worcester Shrubhill Station which is a 20 minute walk or 5/10 minute taxi ride from the racecourse.

Parking at Worcester Racecourse

Car parking is free at Worcester Racecourse when hiring our venue for your event, with ample free parking in front of the Grandstand and Centre Course car park if you are hosting a larger event. For the Grandstand car park use postcode WR1 3EJ, for the Centre Course car park use postcode WR1 3EH to take you to the car park entrance.

Contact us

Worcester Racecourse,
Pitchcroft WR1 3EJ

01905 253 64

www.worcester-racecourse.co.uk
info@worcester-racecourse.co.uk